

82870 Pneumatic actuated controllers



- Port size: Internal thread
P = G1/8, Z = G1/4
- Compact design
- Switching time and interval adjustable
- Fully pneumatic controller, suitable for robust operation
- Ideal for use in hazardous zones
- International approvals

Technical features

Fluid (control section):
Filtered air – compressed air supply via conditioning unit with a 5 ... 10 µm filter, without oiler (for unpurified compressed air we recommend an additional 50 ... 75 µm primary filter)

Reproducibility:
±5%

Mounting position:
Optional

Interval:
Adjustable 2 ... 200 s, set on about 10 s in factory

Pulse time:
Adjustable 30 ... 1.000 ms, approx ca. 200 ms

Fluid temperature:
0 ... +70°C (+32 ... +158°F),
–25 ... +70°C (–13 ... +158°F)
For dry air

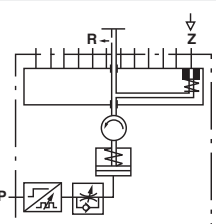
Ambient temperature:
–20 ... +40°C (–4 ... +104°F)

Protection class:
II 2GD c IIB T85°C
I M2c

Material:
Body: grey cast iron

Technical data – standard models

Wiper arm (valve venting) operated by spring return in the cylinder

| Symbol | Number of control ports *1) | Control section Pressure Port P | Operating pressure Control section (bar) | Operating section Control port Z | Operating pressure Operating section (bar) | (psi) | Weight (kg) | Model |
|---|--------------------------------|---------------------------------------|--|-------------------------------------|--|--------------|----------------|--------------------|
|  | 10 | G1/8 | 2 ... 8 | G1/4 | 0,5 ... 8 | 7,25 ... 116 | 7,8 | 8287054.0000.00000 |
| | 12 | G1/8 | 2 ... 8 | G1/4 | 0,5 ... 8 | 7,25 ... 116 | 7,8 | 8287154.0000.00000 |
| | 14 | G1/8 | 2 ... 8 | G1/4 | 0,5 ... 8 | 7,25 ... 116 | 7,8 | 8287254.0000.00000 |
| | 16 | G1/8 | 2 ... 8 | G1/4 | 0,5 ... 8 | 7,25 ... 116 | 10,9 | 8287354.0000.00000 |
| | 20 | G1/8 | 2 ... 8 | G1/4 | 0,5 ... 8 | 7,25 ... 116 | 10,9 | 8287554.0000.00000 |

*1) Control ports not required have to be sealed with a plug



Option selector

| Number of control ports *1) | Substitute |
|-----------------------------|------------|
| 10 | 0 |
| 12 | 1 |
| 14 | 2 |
| 16 | 3 |
| 20 | 5 |

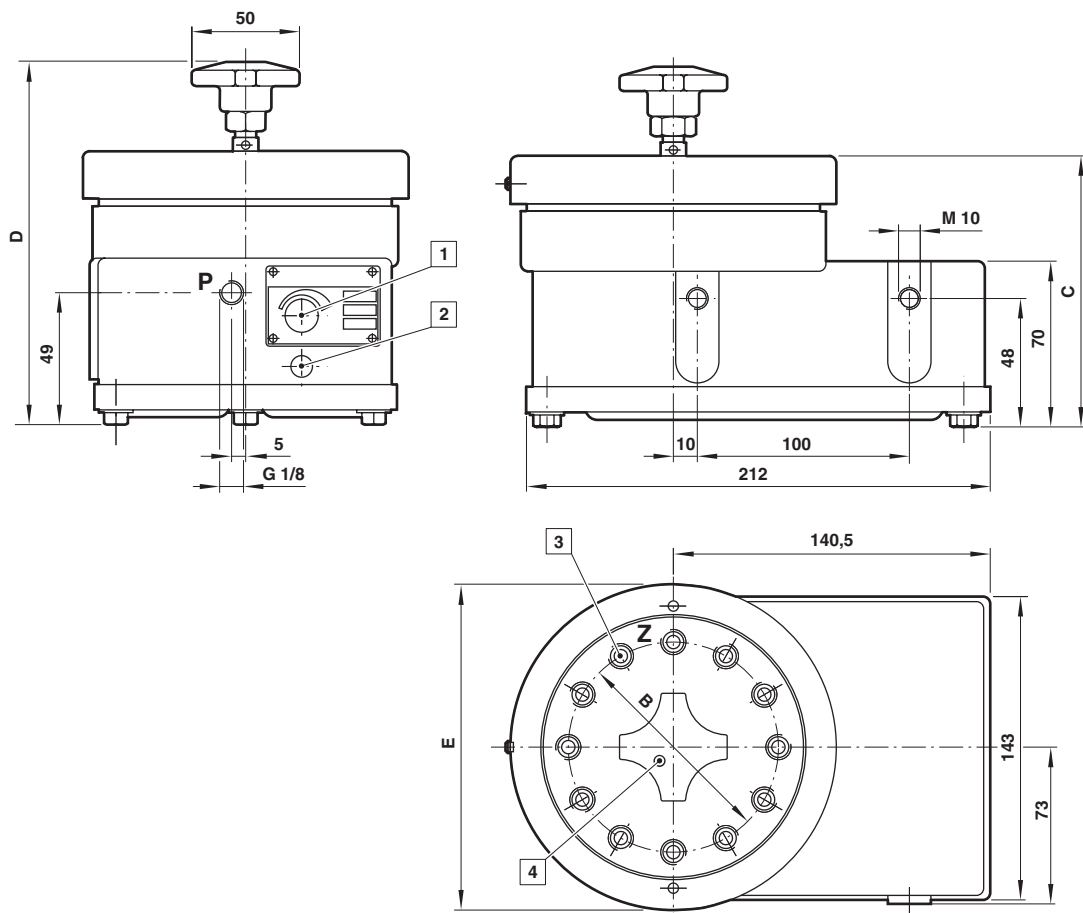
*1) Control ports not required have to be sealed with a plug

8287★.54.0000.00000

| Valve options | Substitute |
|---------------------------------------|------------|
| Units with 18 control ports available | on request |

Dimensions

Dimensions in mm
Projection/first angle



- 1 Interval-Adjustment
- 2 Silencer
- 3 Control port G1/4
- 4 Dot indicates the position of the wiper arm

| Number of control ports *1) | B | C | D | E | Model |
|-----------------------------|-----|-----|-----|-----|--------------------|
| 10 | 95 | 115 | 167 | 150 | 8287054.0000.00000 |
| 12 | 100 | 115 | 167 | 150 | 8287154.0000.00000 |
| 14 | 100 | 115 | 167 | 150 | 8287254.0000.00000 |
| 16 | 140 | 125 | 170 | 190 | 8287354.0000.00000 |
| 20 | 140 | 125 | 170 | 190 | 8287554.0000.00000 |

*1) Control ports not required have to be sealed with a plug

Note to Pressure Equipment Directive (PED):

The valves of this series are according to Art. 4 § 3 of the Pressure Equipment Directive (PED) 2014/68/EU. This means interpretation and production are in accordance to engineers practice well-known in the member countries.

A certificate of conformity is not designated.