

Industrial Automation

IMI Norgren

Functional Safety
Solutions for Safety Technology



Breakthrough
engineering for
a better world

Contents

Introduction	3
Safety Technology	5
Product Overview	5
Cross monitored safety valves, Series SCVA	6
Cross monitored safety valve with Excelon® connection, Series SCVA10	7
Cross monitored safety valve with integrated soft start and Excelon® connection, Series SCSQ10	8
5/2 directional control valve, Series XSz-V	9
Pneumatic self-monitored 3/2- and 5/2-way, Series XSz-4420	10
5/2-way SXE ISO with electrical position monitoring, Series VSP55	11
3/2 way soft start dump valve, Series VS26	12
Excelon® Plus soft start/dump valves, Series P82C/P82F/P84C/P84F	12
Monitored soft start dump valves, Series P64S/P74S	13
Two-hand control unit, Series XSHC04	13
5/2- and 5/3-way valves air pilot and solenoid pilot actuated, Series ISO★STAR	14
3/2-, 5/2-, and 2x 3/2 way, Series V60 ... 63	14
Pilot operated check valve [blocking valve], Series 102GA	14
Safety pressure relief valves, Series 4440000	15
3/2-way inline lockout valve, Series CR04	15
Pressure switch, Series 18D	15
Product Overview	16
Functional Safety in brief	17
Safety and risk assessment	18
Identification of safety function	18
Determination of the required Performance Levels	19
Select the category	20
Determination of the Performance Levels PL	20
B_{10} / $MTTF_D$ as basic parameters for determining the performance level	21
DC – Diagnostic Coverage	22
CCF – Common Cause Failures	23
Control chain of a safety system	23

Breakthrough engineering for a better world

We create solutions for our customers which enable smarter, safer, more productive and sustainable factories, production lines and warehouse operations. Our pneumatic and electric motion systems help machine builders and end users around the world automate and optimise manufacturing and warehousing processes.

We have partnered with customers in industrial automation for over a century, applying our experience and innovation to create lasting value for their businesses. Our solutions support critical industries such as automotive, food and beverage, pharmaceuticals and even the space industry. We support the automation of precision manufacturing, product assembly, testing and packaging.

We use the latest digital technologies in our automation products and constantly innovate in close partnership with our customers. By applying our deep expertise, we can solve their toughest automation challenges, today and tomorrow. Through increased productivity, efficiency and safety, our customers can serve their own customers better, creating sustainable competitive advantage and delivering growth.

Our world-class product portfolio includes IMI Norgren, IMI Bimba, IMI Bahr and IMI Buschjost.

Breakthrough Engineering you can count on.





Safety Technology

- Over 50 years experience in safety applications
- Safety applications EN ISO 13849
- Competent and professional consulting and system design of safety controls
- Very high B₁₀ levels
- DGUV certified self-monitored safety valves
- Important safety features such as:
 - Safe exhaust
 - Safe position
 - Safe stop
 - Reliable reversing
 - Safely limited speed and more

Product Overview

SCVA



XSz-V



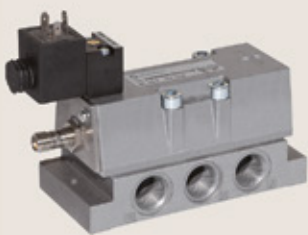
SCVA10



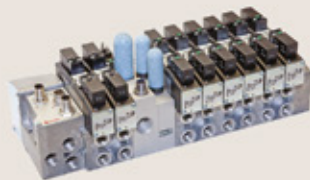
SCSQ



VSP55



VS26



XSz-4420



XSHC04

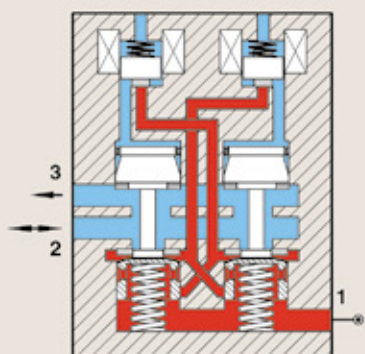


P Valves



Functional diagram

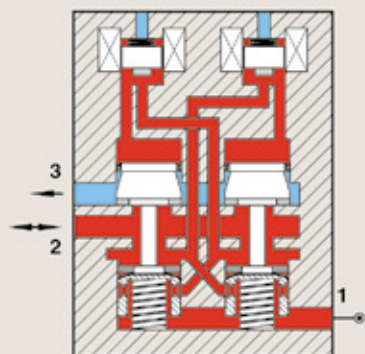
Basic position



Channel "2" onto "3"
Safety silencer relived

Working position

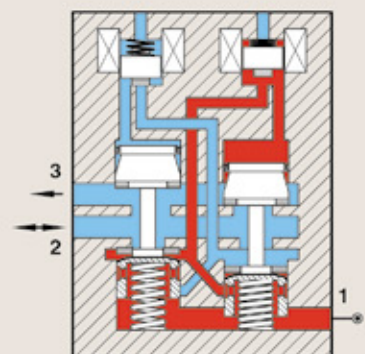
Both solenoids energised



Channel "1" onto "2" turned on

Safety position

For unbalanced control, faulty solenoid, dirty valve, etc.



Port 2 linked to 3

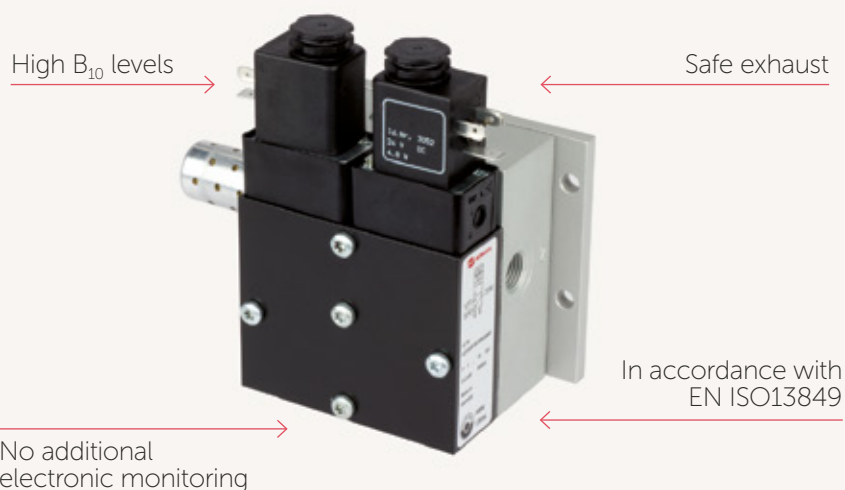
Cross monitored
safety valve

Series SCVA

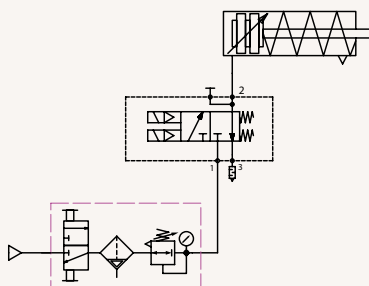
- Sizes: DN 8, 20 and 32
- Port size: G1/4 ... G1
- Control: Pneumatic

The SCVA is a pneumatically monitored valve eliminating the need for further electronic systems. With the appropriate application, performance level "e" (cat. 4) of EN ISO 13849-1 is achieved for the safety function "Pressure building up from '1' to '2' and pressure dropping from '2' to '3'".

- Four port sizes in both BSP and NPT thread forms
- Requires only 50 micron filtration for cost effective operation
- Supplied complete with highly effective exhaust silencer
- Excellent B_{10} values represent extremely long service life until the necessary replacement (T_{10D} -value) of the valves



Example for safety functions for safe ventilation cat. 4 PL-e



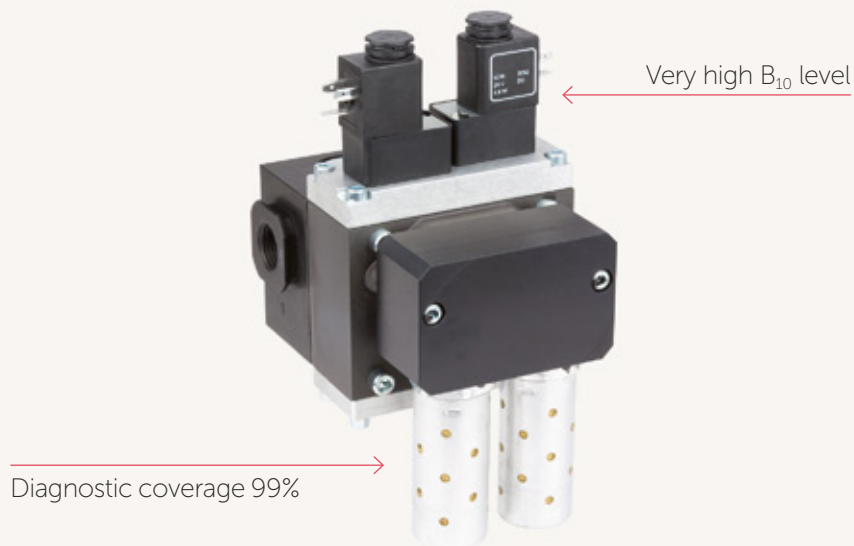
Cross monitored safety valve with Excelon® connection

Series SCVA10

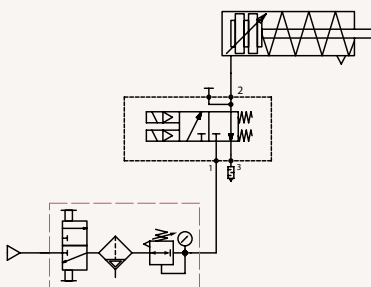
- Sizes: 10 mm
- Port size: G1/2
- Control: Pneumatic

The SCVA10 safety valve is pneumatically monitored and requires no cyclical monitoring or evaluation system. With the appropriate application, performance level "e" (cat. 4) of EN ISO 13849-1 is achieved for the safety function "Pressure building up from '1' to '2' and pressure dropping from '2' to '3'".

- Redundant valve assembly, pneumatic self-monitoring
- Meets the standard EN ISO 13849, category 4, reaches Performance Level e and is DGUV certified
- Cost-efficient decentralized safety application

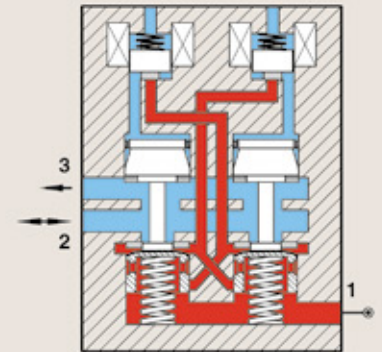


Example for safety functions for safe ventilation cat. 4 PL-e



Functional diagram

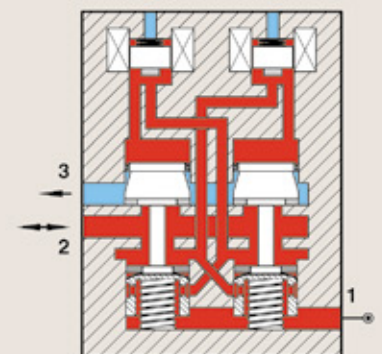
Basic position



Channel "2" onto "3"
Safety silencer relived

Working position

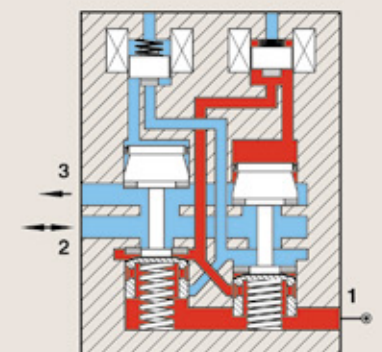
Both solenoids energised



Channel "1" onto "2" turned on

Safety position

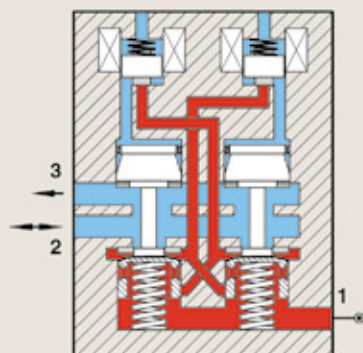
For unbalanced control, faulty solenoid, dirty valve, etc.



Port 2 linked to 3

Functional diagram

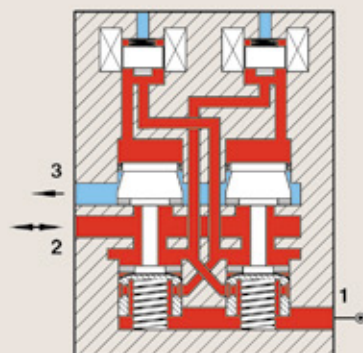
Basic position



Channel "2" onto "3"
Safety silencer relived

Working position

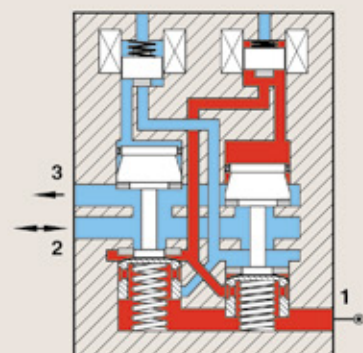
Both solenoids energised



Channel "1" onto "2" turned on

Safety position

For unbalanced control, faulty solenoid, dirty valve, etc.



Port 2 linked to 3

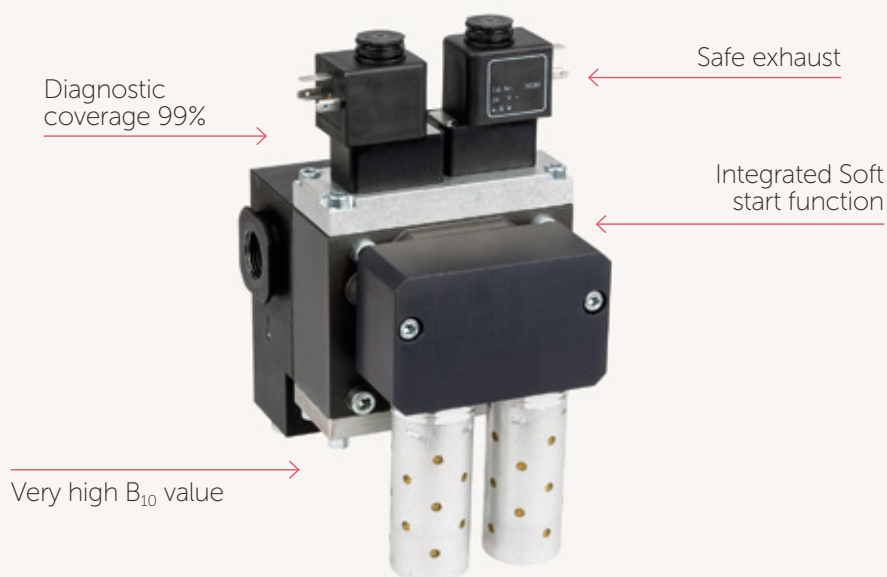
Cross monitored safety valve with integrated soft start and Excelon® connection

Series SCSQ10

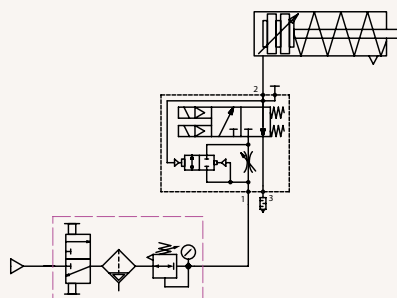
- Sizes: 10 mm
- Port size: G1/2
- Control: Pneumatic

In applications requiring a controlled re-start of the air supply, the SCSQ10 includes a variable soft start function. This can be adjusted to suit the downstream volume and required fill rate. Like the SCVA, the SCSQ is pneumatically monitored to meet the requirements of current safety legislation and requires no additional electronics.

- Excellent B_{10} values represent extremely long service life until the necessary replacement (T_{100} -value) of the valves
- Can be mounted as part of a control system or connected to Excelon® air preparation units via integral adaptors
- Supplied complete with highly effective exhaust silencer



Example for safety functions for safe ventilation cat. 4 PL-e



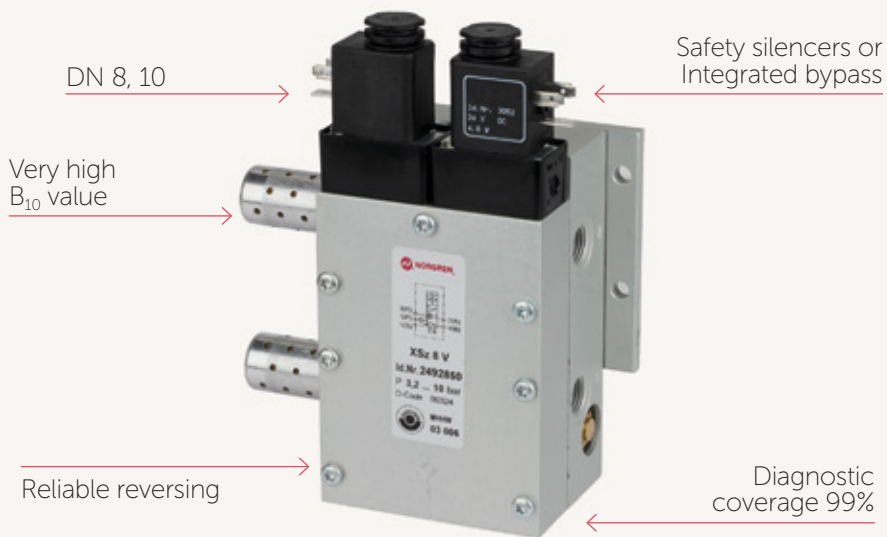
5/2 directional control valve

Series XSz-V

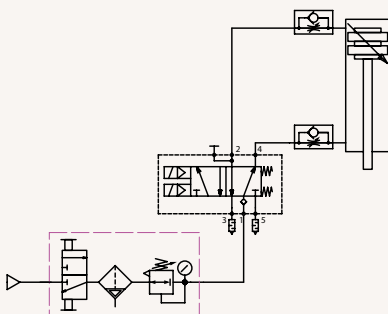
- Sizes: 8 mm and 10 mm
- Port size: G1/4 ... G1/2
- Control: Pneumatic

The 5/2-way safety valve consists of two mechanically separated pilot control systems and main valve systems. The valves are pneumatically operated and the dynamic self-monitoring system does not require additional electrical monitoring. With the appropriate application, performance level "e" (cat. 4) of EN ISO 13849-1 is achieved. Excellent B_{10} values represent extremely long service life until the necessary replacement (T_{10D} -value) of the valves

- Double valve control system, dynamic self-monitoring
- Fast exhaust capability
- Improves safety and reduces downtime
- No additional electrical monitoring required



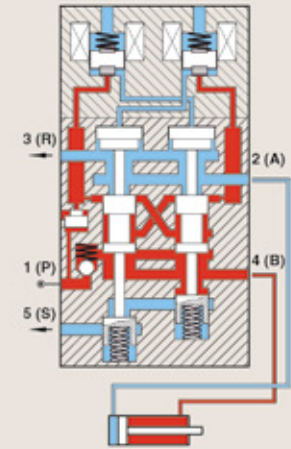
Example of safety function safe reversing Cat 4 PL e



Function of the dynamic self-monitoring (diagnostic coverage 99%)

Not actuated

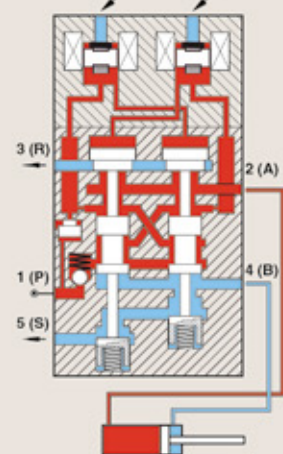
basic position both magnets



Channel 2 relieved 3
Channel 1 is switched on 4

Working position

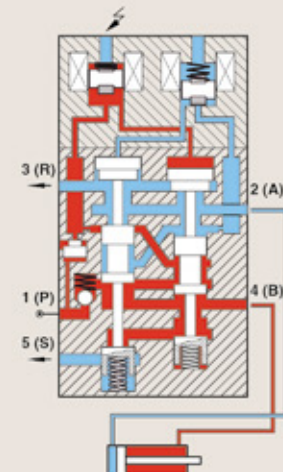
Driven both magnets



Channel 1 is switched on 2
Channel 4 relieved 5

Safety position

With asymmetrical driving



Channel 2 relieved 3
Channel 1 is switched on 4

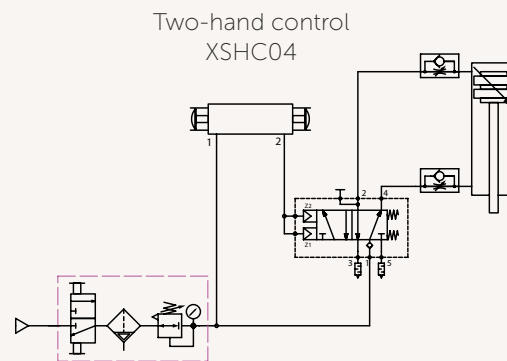
Pneumatic self-monitored 3/2- and 5/2-way

Series XSz-4420

- Sizes: 5,0 ... 8,0 mm
- Port size: G1/2
- Control: Pneumatic

The pneumatic controlled 3/2 and 5/2-way safety valves have a redundant valve assembly. The intrinsically safe dual valve control system with dynamic self-monitoring functions guarantee the highest possible degree of diagnostic coverage at 99%, without the need for additional diagnostic components. Furthermore, this safe design does not require additional electronic diagnostics nor interval tests or cyclical circuits. These valves achieve the performance level „e“ (Category 4) in accordance with EN ISO 13849, DGUV certified. High B_{10} levels represent optimal durability until the necessary preventative replacement (T_{10D} -value).

Control example two-hand control with pneumatic control 5/2-way safety valve XSz-4420



Dynamic self-monitoring function →



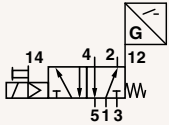
← Performance level
„e“ (Category 4)

5/2-way SXE ISO of electrical position monitoring

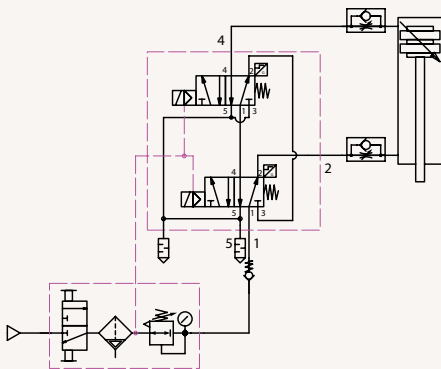
Series VSP55

- Sizes: base ISO3

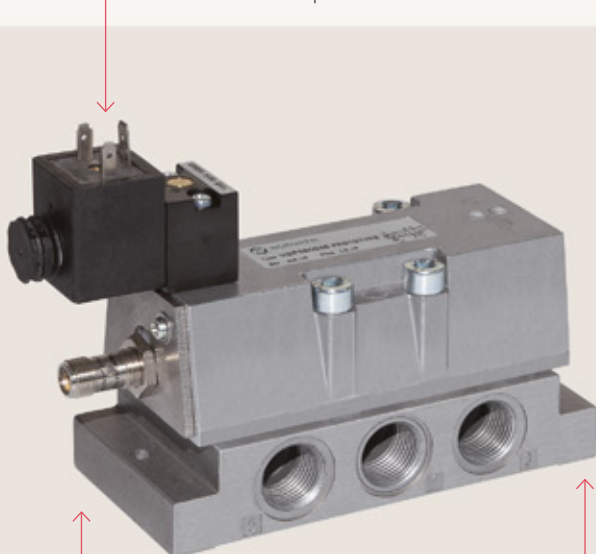
5/2-way valves with additional electrical position monitoring for use in safety-related systems or subsystems. Using two valves in a redundant safety control it can realize a high performance level up to "e" (Category 4) in accordance with EN ISO13849.



Example control reliable reversing Cat. 4 PL-e

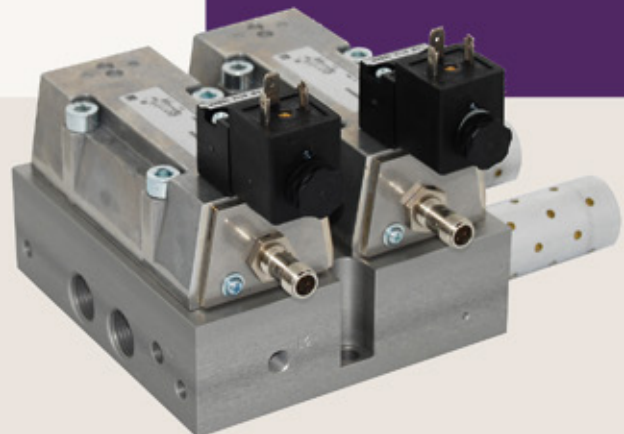


Single valve mounted on
ISO1 / ISO3 base plate

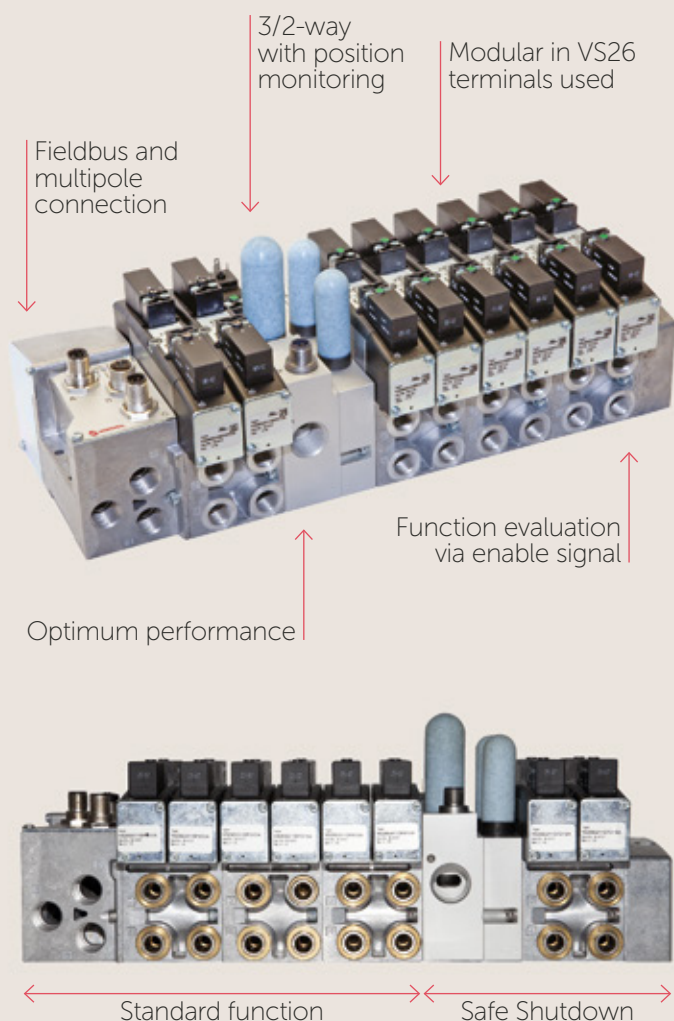


High Flow

Turns off >0 (bar)



Compact redundant control block
for safety function safe reversing

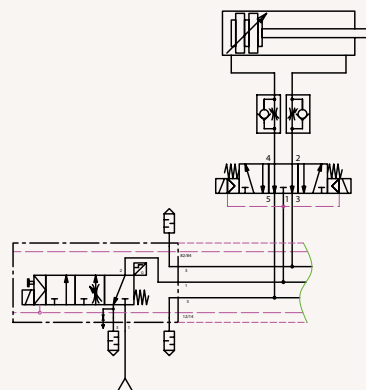


Optimum performance

3/2-way soft start dump valve Series VS26

- Sizes: 26 mm, ISO 15407-2

Integrated in the Valve Islands VS26 Series, these valves are suitable for application in safety-related systems. The 3/2-way valves are electronically monitored and fail-safe without residual pressure suitable for safety function "safe ventilation". The soft start enables controlled increase of downstream pressure on startup. Through integration of the valve in the safety system in combination with downstream valve blanking disks, a two-channel function and high performance levels can be achieved (in accordance with EN ISO 13849). Only the right-hand valve positions are pneumatically actuated and locked; the valve is closed on the left side. To order please use valve island configurator.



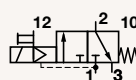
Excelon® Plus soft start/dump valves Series P82C/P82F/P84C/P84F

- 1/4...3/4 (ISO and NPT)

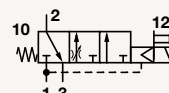
We offer a 3/2 Dump valve, with or without soft start, as a standard option in both Excelon® Plus 82 & 84 series. They perform the same function as an on/off manual valve but can be hard wired into a safety shut down circuit such as an emergency stop system (if using the solenoid version). A pneumatic pilot version is also available whereby the valve can be switched via an auxiliary pneumatic signal.

- Supporting designers in complying to ISO 12100, ISO 13849-1 and the European Machinery Directive 2006/42EC.
- Performance Level rated (PLC Cat. 1)
Safety function: Safe Venting
- B₁₀ Value(s)
P82C and P82F: 1.4 million life test cycles
P84C and P84F: 1.1 million life test cycles

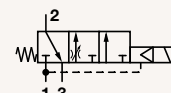
P82C / P84C



P82F



P84F



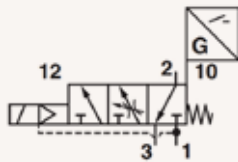
Monitored soft start dump valves

Series P64S/P74S

- Port size: G3/8 ... G3/4

Whilst not including the cross monitoring function, these products have the facility to provide an electrical output indicating the valve status. This can be incorporated into the machine control system where required – for example in a 2 channel system requiring a level of redundancy. Available in both Excelon® and Olympian Plus ranges.

- Rate of pressure build up can be adjusted to suit the application
- High capacity dump facility for optimum performance
- Positively driven micro switch indicating valve position



Two-hand control unit

Series XSHC04

- Tube size: O/D 4 mm

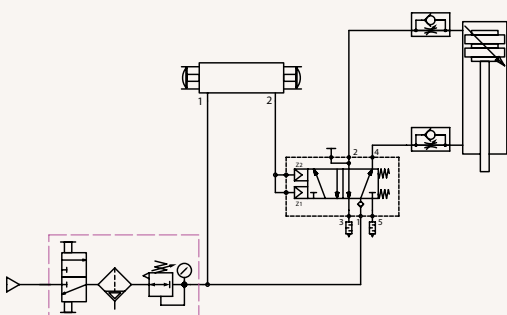
The standard IMI Herion two-hand start unit can be fitted to any machine function where the requirement exists for the operator to utilise both hands in order to begin operation. Both buttons need to be operated within 0.5 seconds in order to achieve an output. The unit is supplied as a strong, sealed unit designed to prevent accidental operation.

- Meets requirements of EN574 class IIIB
- No additional setting or adjustment required

Designed to prevent accidental operation

Control example two-hand control with pneumatic control 5/2-way safety valve XSz-V

Two-hand control
XSHC04





5/2- and 5/3-way valves air pilot and solenoid pilot actuated

Series ISO★STAR

- ISO 1 to ISO 3
- Port size: G1/4 ... G1/2c

Excellent B_{10} values due to special valve design.

3/2-, 5/2- and 2x 3/2 way

Series V60 ... 63

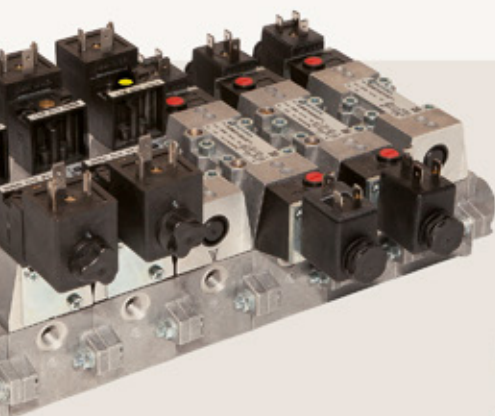
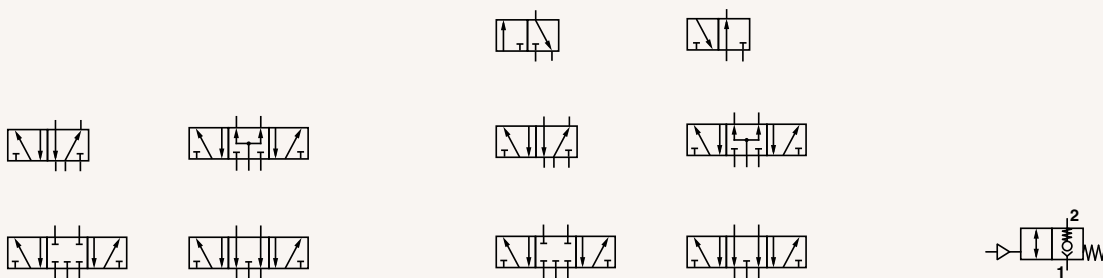
- Port size: G1/8 ... G1/2

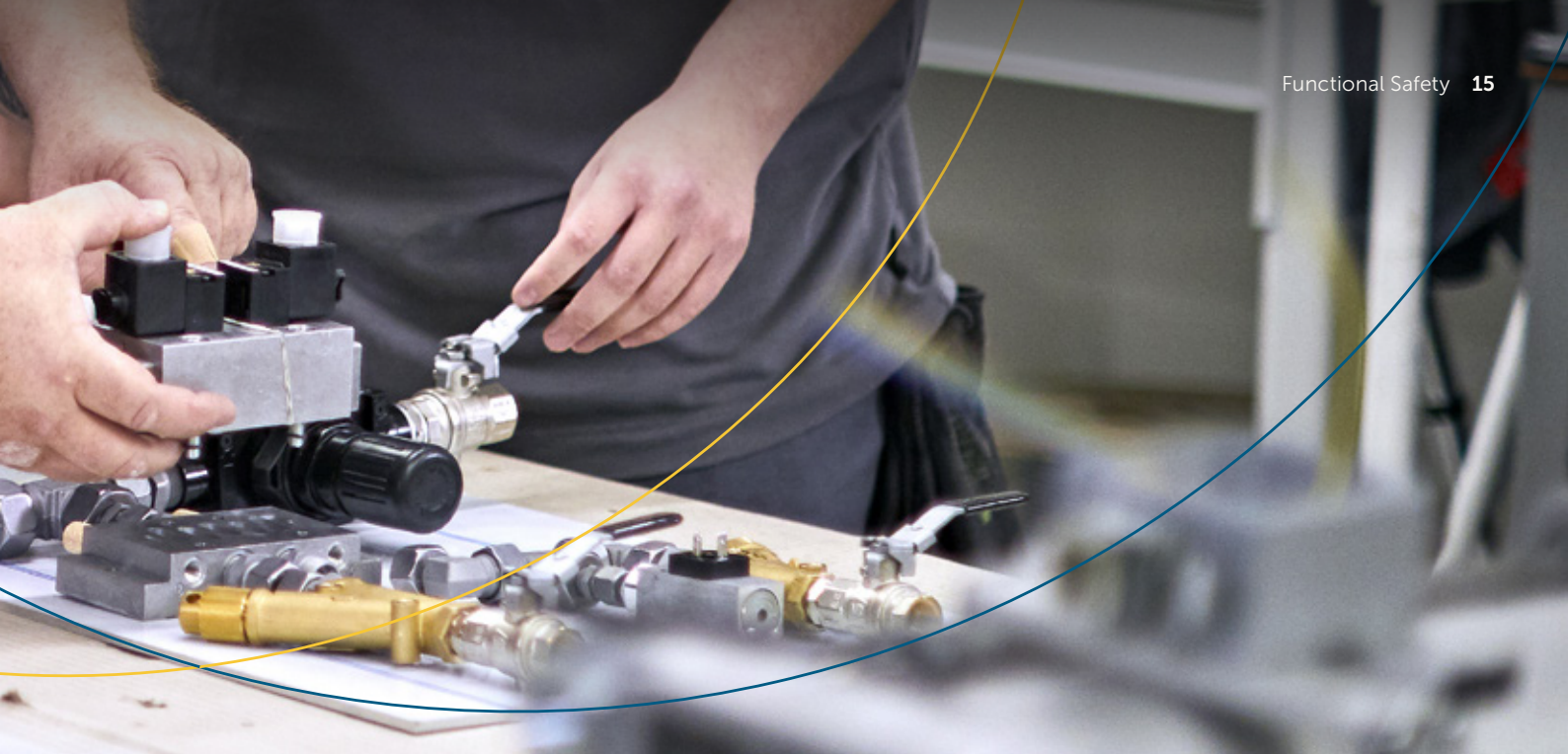
High B_{10} values.

Pilot operated check valve (blocking valve)

Series 102GA

- Port size: G1/4 ... G1/2 and 4 ... 12 mm





Safety pressure relief valves

Series 4440000

- Port size: G1/4 ... G3/4



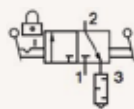
3/2-way Inline lockout valve

Series CR04

- Port size: G1/2 ... G1

When carrying out maintenance on machine installations, the safety of personnel is of vital importance. "LOTO" or "lock out tag out" is a primary function required before any work begins. The air supply to the area should be isolated and the downstream air exhausted quickly and safely then locked to ensure safety of the workforce. Our lock out valves provide a solution to this task, and are easily fitted into the system.

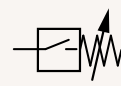
- Valves can only be locked in the "off" position and made secure with a padlock.
- Operating handle provides a clear, simple method of operation
- Complete with integral heavy duty silencer / muffler



Pressure switch

Series 18D

- Port size: G1/4



Product Overview

We offer a full suite of pneumatic and electropneumatic products for the efficiency and safety of many pneumatic applications.



●● Actuators ●●



●● Valves ●●



●● Vacuum ●●



●● Air Preparation ●●



●● Fittings, Tubing, Accessories ●●



●● Pressure Switches ●●

Functional Safety in Brief

Machinery Directive 2006/42/EC and EN ISO 13849 Part 1 and Part 2

With an effective date 29.12.2009 the Machinery Directive 2006/42/EC replaced the previous Machinery Directive 98/37/EC and defines fundamental standards of Machine Safety in the European domestic market. Only machines, that comply with the demands of the Machinery Directive, are allowed to be introduced on the European market. This includes new machines as well as existing machines that have experienced significant or considerable variations or modifications or have served a different use. In accordance with conditions of the Machinery Directive and the guideline, compliant machines must be furnished with CE-labelling, Declaration of Conformity and the required user information. The harmonized standard EN ISO 13849 (Type B-norm) assists the Machinery Directive with the technical implementation of the safety demands and reliable control systems. It provides generally important principles in terms of the planning and evaluation of safety-related parts of a control system, control system architecture as well as the quality of risk reduction and the validation procedures for the safety function, categories and Performance Levels of safety-related parts of controls.



Safety and risk assessment

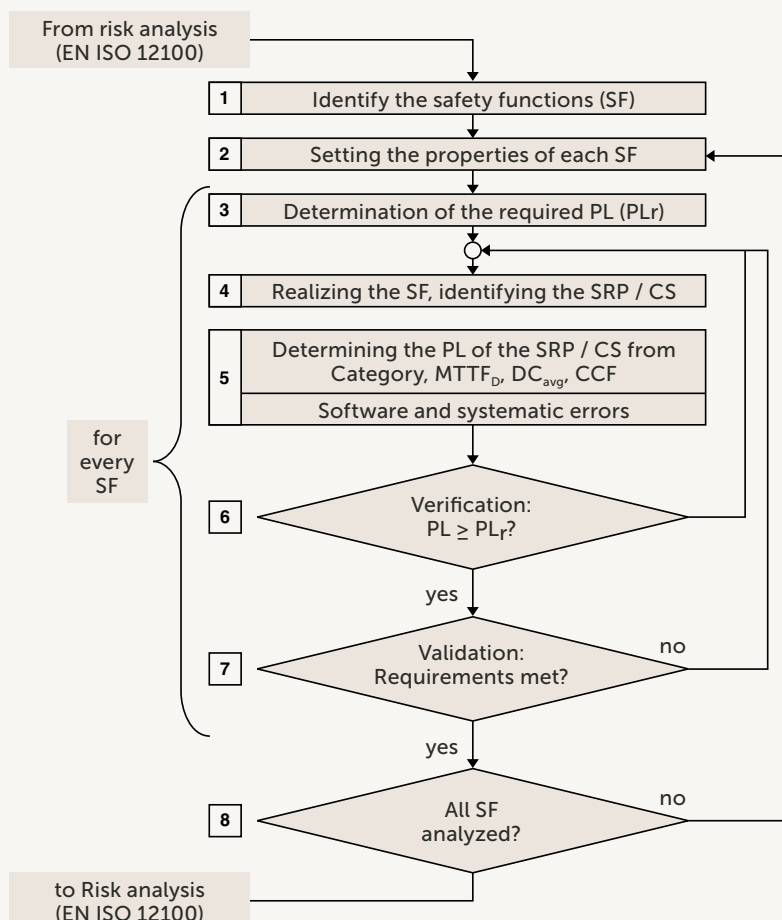
A machine should be constructed to guarantee safety as much as possible. Any potential danger must have its risk reduced/minimized by protections or measures e.g. a pneumatic safety control system. For unavoidable residual risk, the corresponding necessary documentation must be provided. A comprehensive and standardized risk assessment will take place at the beginning of the process for the evaluation of the machinery safety.



Identification of safety function

If in the risk analyses hazardous movements were detected then, in accordance with the danger, counteracting safety functions must be defined and provided. Only after more precise definition of the actual safety function can the corresponding subsystems of the safety control system be adequately executed and interpreted.

- Safe exhausting of a system
- Stop of a hazardous movement
- Stop and obstructing of a hazardous movement
- Reversing a hazardous movement
- Protection against accidental start-up and many others



●● Iterative process for the design of the safety-related components of the control system ●●

SF = Safety Function
PL = Performance Level

SRP/CS = Safety Related Parts of Control Systems
MTTF_D = Mean Time to Dangerous Failure
DC_{avg} = Average Diagnostic Coverage
CCF = Common Cause Failure

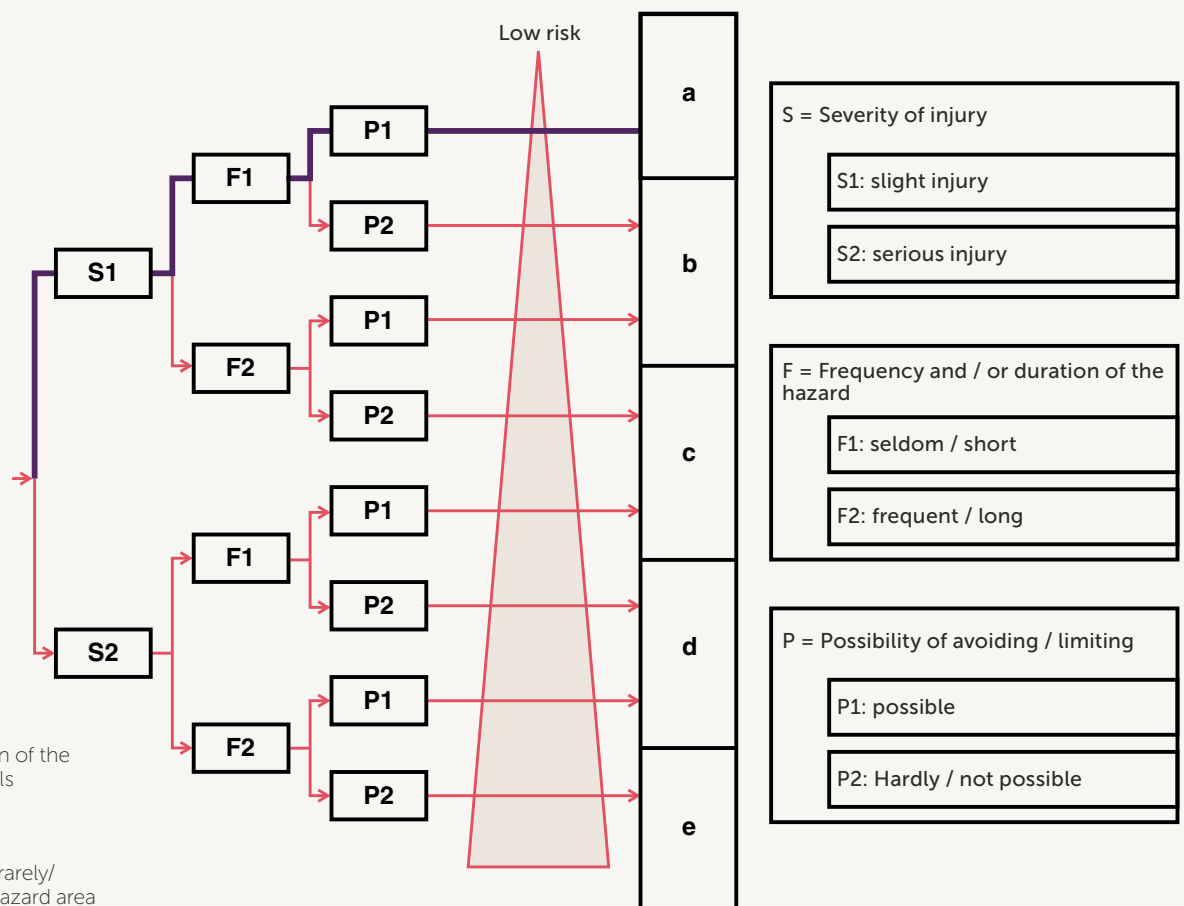


Determination of the required Performance Levels

The Performance Level is a measure of the quality of the risk reduction and must be separately ascertained for every safety function. Within a machine with multiple safety functions and various hazard potentials, different Performance Levels could be necessary.

The three deciding criteria for ascertaining the respective potential hazard areas' necessary Performance Levels are:

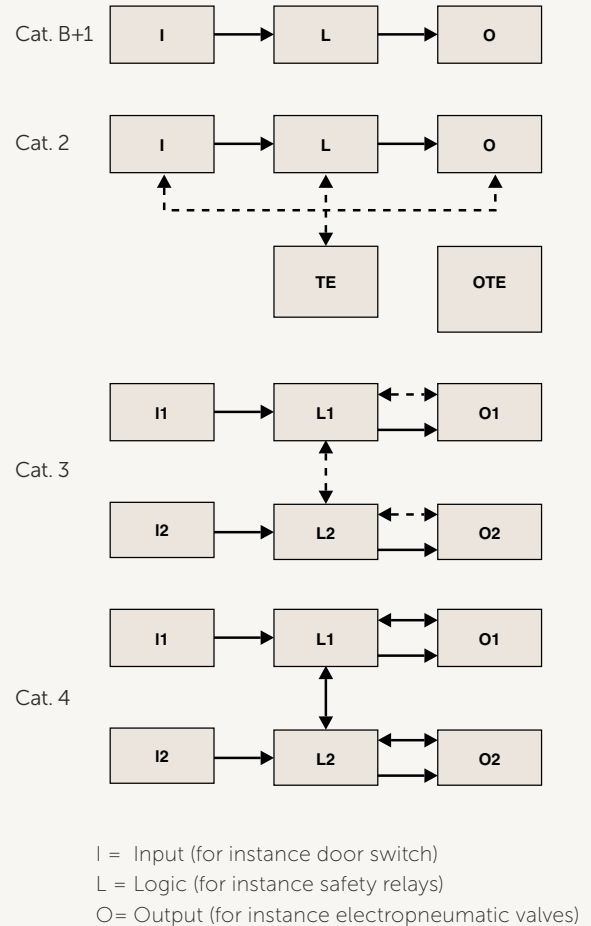
- How severe would a potential injury be?
- How frequently do employees come into contact with potentially hazardous areas?
- What possibilities does one have in a critical case, to escape or avoid the hazard?



Select the category

EN ISO 13849 outlines 5 different categories (B, 1, 2, 3, 4) describing the respective architectures of the safety control system and with that the durability and the performance in the case of an error.

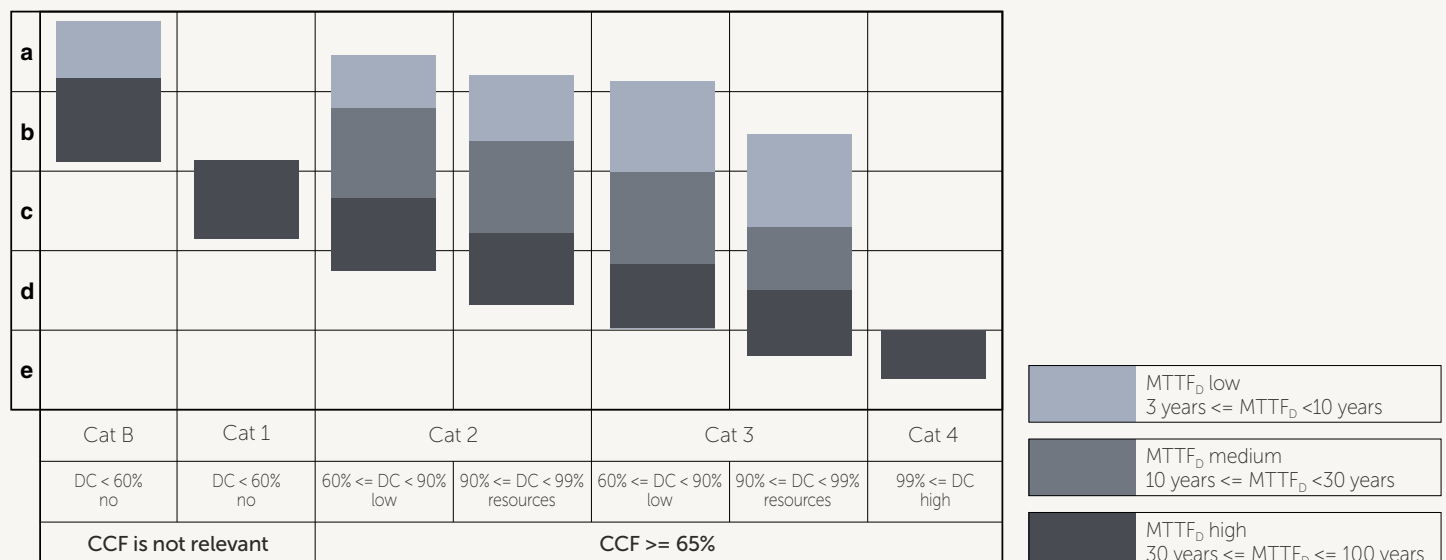
- Category B: Single-channel, non-redundant safety system. One single fault leads to the loss of the safety function.
- Category 1: Like Category B, but with a higher resistance to failure through use of well-tried components.
- Category 2: Safety control system with additional test channels and cyclical tests for safety functions with suitable test rates. For PL_r=d the output (OTE) shall initiate a safe state.
- Category 3: Dual-channel, redundant safety system. One single error does not lead to the loss of the safety function, but accumulated undetected faults may.
- Category 4: Dual-channel, redundant safety system. One single error or the accumulation of faults does not lead to the loss of the safety function.



Determination of the Performance Levels PL

Simplified determination of the Performance Levels by means of the bar charts depending on:

- the selected control architecture (category)
- the MTTF_D-value
- the diagnostic coverage
- and the CCF review



B_{10} / $MTTF_D$ as basic parameters for determining the performance level

In accordance with the requirements of a safety control system and dependent on the necessary safety functions, suitable individual components should be selected and implemented within corresponding control architecture. We offer, for this purpose, a very broad product range of components and supports the correct selection of components together with the provision of the necessary characteristic values as a basis for evaluation of the accomplished Performance Levels. The basis for evaluation and determination of the accomplished Performance Levels of a safety control system are the B_{10D} / $MTTF_D$ characteristic values of the relevant individual safety components which are decisive for the safety functions.

- B_{10D} : The mean number of operating cycles until up to 10% of the considered units have failed dangerously
- $MTTF_D$: Average operating life, until up to 10% of the considered units have failed dangerously. For pneumatic and electro-pneumatic components the $MTTF_D$ is calculated as below

$$B_{10D} = 2 \times B_{10}$$

$$MTTF_D = \frac{B_{10D}}{0,1 \cdot n_{op}}$$

$$n_{op} = \frac{d_{op} \cdot h_{op}}{t_{Cycle}} 3600 \frac{s}{h}$$

n_{op} = cycles per year

h_{op} = is the mean operating time in hours per day

d_{op} = is the mean operating time in days per year

t_{Cycle} = is the average time between the beginning two consecutive cycles of the components (i.e. switching of a valve) in seconds per cycle.

Electronic components do not age over cycles of operations but instead over time. Therefore $MTTF_D$ isn't calculated from B_{10D} but called by the supplier of the component.

Classification of $MTTF_D$ of each channel

MTTF _D for each channel	
Designation	Area
not acceptable	0 years ≤ MTTF _D < 3 years
low	3 years ≤ MTTF _D < 10 years
medium	10 years ≤ MTTF _D < 30 years
not applicable	30 years ≤ MTTF _D ≤ 100 years
invalid	100 years < MTTF _D

MTTF_D values less than 3 years are not acceptable.

Calculating MTTF_D total of a single channel

$$\frac{1}{MTTF_D} = \sum_{i=1}^N \frac{1}{MTTF_{Di}} = \sum_{j=1}^N \frac{n_j}{MTTF_{Dj}}$$

Calculating MTTF_D total of two channels (redundant overall system)

$$MTTF_D = \frac{2}{3} \left[MTTF_{DC1} + MTTF_{DC2} - \frac{1}{\frac{1}{MTTF_{DC1}} + \frac{1}{MTTF_{DC2}}} \right]$$

Being MTTF_{DC1} and MTTF_{DC2} values for the two individual channels.

Each channel has to be reduced to 100 years (Cat. B,1,2 and 3) or 2.500 years (Cat. 4) before it is used in this formula.

To calculate the safety function, we provide you with all safety-relevant key figures.



DC – Diagnostic Coverage

The Diagnostic Coverage (DC) is a measure of the effectiveness of the self-test and monitoring measures in a control system. It is determined by the proportion of detectable dangerous failures amongst all dangerous failures. For higher-ranking control architecture, (2 to 4) the corresponding failure detection must be implemented in the control system. The value of the degree of diagnostic coverage is dependent on the respective selected measures of failure detection and must amount to at least 60%. The top category 4, for example, requires diagnostic coverage of 99%.

Classification of diagnostic coverage

DC (Diagnostic Coverage)	
Designation	Area
none	DC < 60%
low	60% ≤ DC < 90%
medium	90% ≤ DC < 99%
high	99% ≤ DC

Examples of evaluation of diagnostic coverage (DC)

Input unit	
Action	DC
Cyclical test pulse by dynamically changing the input signals	90%
Plausibility check i.e. usage of the closing and opening contacts of the forcibly actuated relays	99%
Cross-comparison of input signals without dynamic test	0% to 99%, depending on how often a signal change by the application
Cross-comparison of input signals with dynamic test, if short circuits could not be observed (for multiple I/O)	90%
Cross-comparison of input signals and intermediate results in the Logic (L) and temporal and logic program run monitoring and detection of static faults and short circuits (for multiple I/O)	99%
Indirect monitoring (e.g. monitoring by pressure switches, electrical position monitoring of actuators)	90% to 99%, depending on the application
Direct monitoring (e.g. electrical position monitoring of control valves, monitoring of electro-mechanical devices by mechanically linked contact elements)	99%
Error detection during the process	0% to 99%, depending on the application; this measure is not sufficient for the required performance level "e"!
Monitoring of some features of the sensors (Response time, range of analogue signals, e.g. electronic resistance, capacitance)	60%

Within a safety control system various measures for fault detection can be provided appropriate to the individual safety components.

Calculation of diagnostic coverage of an entire safety control

$$DC_{avg} = \frac{\frac{DC_1}{MTTF_{D1}} + \frac{DC_2}{MTTF_{D2}} + \dots + \frac{DC_N}{MTTF_{DN}}}{\frac{1}{MTTF_{D1}} + \frac{1}{MTTF_{D2}} + \dots + \frac{1}{MTTF_{DN}}}$$

CCF – Common Cause Failures

To evaluate the robustness of a dual-channel safety position and possibilities of failures common cause must be considered. The CCF is quantified in accordance with specific criteria, which is connected to a Point system and must reach a minimum score of ≥ 65 in order to meet the requirements.

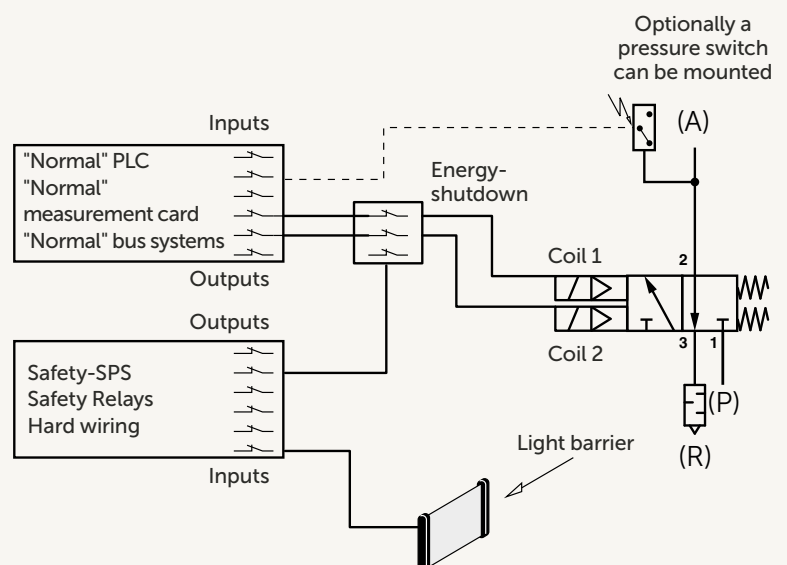
A potential Common Cause Failure can be caused for example through incorrect upstream compressed air preparation. If the compressed air is not accordingly pre-filtered, under some circumstances the valves' two redundant channels could become simultaneously contaminated and possibly, as a result, simultaneously fail. For prevention adequate and effective compressed air treatment is to be provided.

Measure against CCF	Score
Separation / Segregation	
Physical separation between the signal paths: separation in wiring/piping, sufficient clearances and creep age distances on printed-circuit boards.	15
Diversity	
Different technologies/design or physical principles are used, for example: first channel programmable electronic and second channel hardwired. Different kind of initiation, pressure and temperature sensing. Valves from different manufactures.	20
Design / application / experience	
Protection against over loading, over-pressure, over-current, etc.	15
Components used are well-proven	5
Assessment / analysis	
Are the results of a failure mode and effect analysis taken into account to avoid common-cause-failures in design.	5
Competence / training	
Have designers/technicians been trained to identify the causes and consequences of common cause failures?	5
Environmental	
Prevention of contamination and electromagnetic compatibility (EMC) against CCF in accordance with appropriate standards. Fluidic systems: filtration of the pressure medium, prevention of dirt intake, drainage of compressed air e.g. in compliance with the component manufacturer's requirements concerning purity of the pressure medium. Electric systems: Has the system been checked for electromagnetic immunity, e.g. as specified in relevant standards against CCF? For combined fluidic and electric systems, both should be considered.	25
Other influences. Have the requirements for immunity to all relevant environmental influences such as temperature, shock, vibration, humidity (e.g. as specified in relevant standards) been considered?	10
Total	
Max. achievable: 100 points, minimum requirement to pass CCF: 65 points.	

Control chain of a safety system

A complete safety chain consisting of three subsystems, each with an independent function

- Subsystem 1: Input Acquisition of information i.e.: photocell, limit switches, emergency stop switch etc.
- Subsystem 2: Logic Processing of the information for the introduction of necessary safety function i.e.: Safety-SPS, safety relays etc.
- Subsystem 3: Output i.e.: Electropneumatic valves, etc



Our Industrial Automation sector operates four global centres of technical excellence and a sales and service network in 50 countries, as well as manufacturing capability in Europe, Americas and Asia Pacific.

Supported by distributors worldwide.

For further information, scan this QR code or visit

www.imiplc.com/industrial-automation



Legal notice

The information about functional safety included in this brochure exclusively serves the purpose of giving advice. It was compiled by the authors after best knowledge and with greatest possible care. Please note compliance with directives and standards. As far as we have listed directives and standards, we cannot guarantee that they are complete. Featured solutions, assemblies and product arrangements have to be regarded as examples

for the appropriate products/assemblies only. We offer customised solutions for specific applications, please contact us for more information. Please also note that you (customer/user) are responsible for compliance with and verification of directives, standards and laws regarding construction, manufacturing and product information for the specific application. Therefore, we do neither assume guarantee nor liability for solutions developed by the customer (user) for its own specific applications.

Industrial Automation

IMI Norgren
IMI Bimba
IMI Bahr
IMI Buschjost

The information in this brochure is provided for informational and promotional purposes only and is provided "as is" and without warranties of any kind, whether express or implied, including but not limited to implied warranties of satisfactory quality, fitness for a particular purpose and/ or correctness.

Any specifications, features, pricing, or availability contained in this brochure are subject to change without prior notice. IMI plc does not represent or warrant that the information and/or specification in this brochure are accurate, complete, or current and therefore make no warranties or representation regarding the use of the content. IMI plc or one of its subsidiaries own all images, logos, product brands, and trademarks mentioned in this brochure. Unauthorised use, reproductions, or modification of this content is prohibited.

© Copyright IMI plc. All rights reserved.

z10318BR en/12/24

Selected Images used under license
from Shutterstock.com

